



# Report of Test

## LLIA000901-048-R01\*

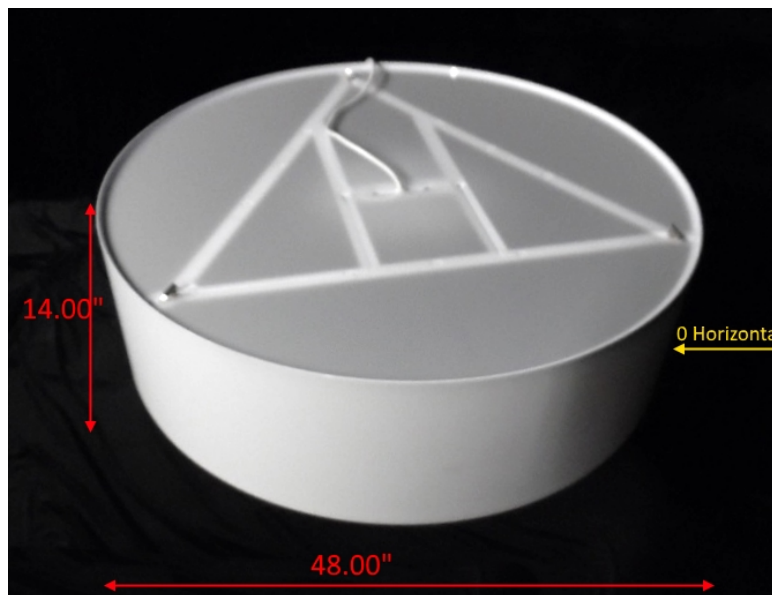
\*This test report supersedes test report LLIA000901-048

Catalog Number: P54814/F11/D61/L414

Pendant mounted, formed white enamel steel frame with white "lumenate" diffuser, translucent white top and bottom enclosures.

Six white LED modules with clear patterned hemispherical lenses below each.

Two ERP ESP050W-1200-42 LED drivers and two ERP ESS030W-0620-42 LED drivers  
120.0Vac, 60.00Hz, 1.206A, 142.8W, 0.987PF, 11.3%THD(i)



### Performance Summary

Total Light Output	10521 lm
Luminaire Power	142.8 W
Luminous Efficacy	73.7 lm/W

**PREPARED FOR : Lumetta, Inc, 33 Minnesota Avenue, Warwick, RI 02888, USA**



**Test Report No. LLIA000901-048**

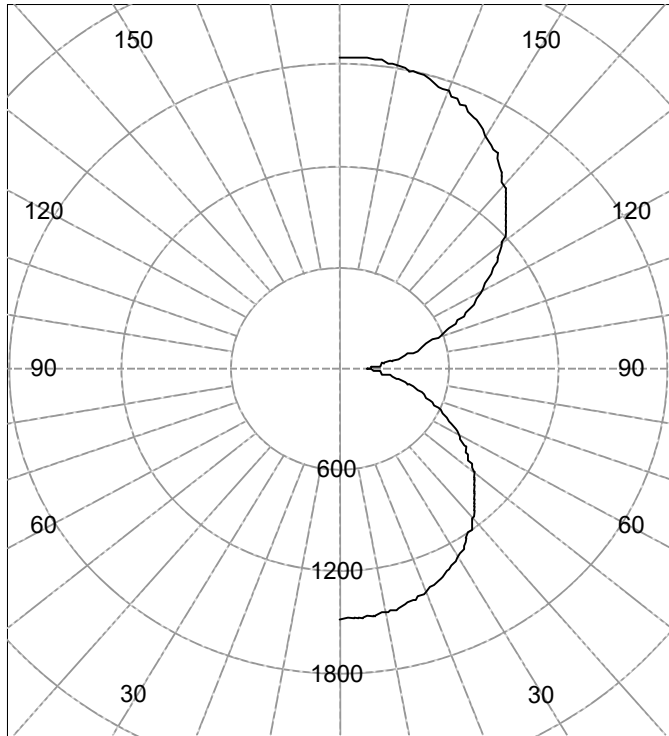
Catalog Number: P54814/F11/D61/L414

Pendant mounted, formed white enamel steel frame with white "lumenate" diffuser, translucent white top and bottom enclosures.

Six white LED modules with clear patterned hemispherical lenses below each.

Two ERP ESP050W-1200-42 LED drivers and two ERP ESS030W-0620-42 LED drivers  
120.0Vac, 60.00Hz, 1.206A, 142.8W, 0.987PF, 11.3%THD(i)

Legend: All planes - Black (cd)



(Rotational symmetry)

**AVERAGE LUMINANCE (cd / m<sup>2</sup>)**

Gamma	C0
45.0	924
55.0	828
65.0	714
75.0	579
85.0	404

**INTENSITY SUMMARY (cd)**

Gamma	All Planes	Flux (lm)	Gamma	C0	Flux (lm)
0	1478		90	157	
5	1472	140	95	195	225
10	1457		100	301	
15	1431	404	105	439	465
20	1393		110	589	
25	1344	620	115	739	731
30	1284		120	886	
35	1214	759	125	1028	918
40	1134		130	1162	
45	1046	807	135	1286	992
50	950		140	1400	
55	848	759	145	1505	941
60	742		150	1596	
65	633	627	155	1674	772
70	524		160	1738	
75	417	441	165	1785	504
80	314		170	1819	
85	216	241	175	1836	175
90	157		180	1844	

**ZONAL FLUX AND PERCENTAGES**

Zone	Flux (lm)	%Lamp	%Luminaire
0-30	1164	N / A	11.1
0-40	1923	N / A	18.3
0-60	3489	N / A	33.2
0-90	4798	N / A	45.6
40-90	2875	N / A	27.3
60-90	1309	N / A	12.4
90-180	5723	N / A	54.4
0-180	10521	N / A	100.0

Total Light Output = 10,521 lm

Spacing Criterion: 0-180 1.3  
Spacing Criterion: 90-270 1.3

Signed:

Authorized Signatory

Date of test 7-Mar-2018  
Date of report 12-Mar-2018



**Test Report No. LLIA000901-048-R01**

Catalog Number: P54814/F11/D61/L414

Pendant mounted, formed white enamel steel frame with white "lumenate" diffuser, translucent white top and bottom enclosures.

Six white LED modules with clear patterned hemispherical lenses below each.

Two ERP ESP050W-1200-42 LED drivers and two ERP ESS030W-0620-42 LED drivers  
120.0Vac, 60.00Hz, 1.206A, 142.8W, 0.987PF, 11.3%THD(i)

**Intensity (cd) and Flux (lm) data**

Gamma	Intensity	Flux	Gamma	Intensity	Flux
0.0	1478		90.0	157	
2.5	1476		92.5	166	
5.0	1472	140	95.0	195	225
7.5	1466		97.5	242	
10.0	1457		100.0	301	
12.5	1445		102.5	367	
15.0	1431	404	105.0	439	465
17.5	1413		107.5	514	
20.0	1393		110.0	589	
22.5	1370		112.5	665	
25.0	1344	620	115.0	739	731
27.5	1315		117.5	813	
30.0	1284		120.0	886	
32.5	1250		122.5	958	
35.0	1214	759	125.0	1028	918
37.5	1175		127.5	1096	
40.0	1134		130.0	1162	
42.5	1091		132.5	1225	
45.0	1046	807	135.0	1286	992
47.5	999		137.5	1344	
50.0	950		140.0	1400	
52.5	900		142.5	1454	
55.0	848	759	145.0	1505	941
57.5	796		147.5	1552	
60.0	742		150.0	1596	
62.5	688		152.5	1637	
65.0	633	627	155.0	1674	772
67.5	578		157.5	1708	
70.0	524		160.0	1738	
72.5	470		162.5	1763	
75.0	417	441	165.0	1785	504
77.5	365		167.5	1804	
80.0	314		170.0	1819	
82.5	265		172.5	1829	
85.0	216	241	175.0	1836	175
87.5	173		177.5	1842	
90.0	157		180.0	1844	



**Test Number: LLIA000901-048-R01**

Catalog Number: P54814/F11/D61/L414

Pendant mounted, formed white enamel steel frame with white "lumenate" diffuser, translucent white top and bottom enclosures.

Six white LED modules with clear patterned hemispherical lenses below each.

Two ERP ESPO50W-1200-42 LED drivers and two ERP ESS030W-0620-42 LED drivers  
120.0Vac, 60.00Hz, 1.206A, 142.8W, 0.987PF, 11.3%THD(i)

**Coefficients Of Utilization - Zonal Cavity Method**

Effective Floor Cavity Reflectance 0.20

RC	80				70				50			30			10			0
	70	50	30	10	70	50	30	10	50	30	10	50	30	10	50	30	10	0
0	106	106	106	106	97	97	97	97	81	81	81	66	66	66	52	52	52	46
1	96	91	87	83	88	84	80	77	70	67	64	57	55	53	45	43	42	37
2	87	79	73	67	79	73	67	62	60	56	53	49	46	43	39	37	35	30
3	79	69	61	55	72	63	57	51	53	48	44	43	39	36	34	31	29	25
4	72	61	53	46	66	56	49	43	47	41	37	38	34	31	30	27	25	21
5	66	54	46	40	60	50	42	37	42	36	32	34	30	26	27	24	21	18
6	61	48	40	34	55	45	37	32	37	32	27	31	26	23	24	21	19	16
7	56	44	35	30	51	40	33	28	34	28	24	28	23	20	22	19	16	14
8	52	39	32	26	47	36	29	24	31	25	21	25	21	18	20	17	15	12
9	48	36	28	23	44	33	26	22	28	23	19	23	19	16	19	16	13	11
10	45	33	26	21	41	30	24	19	26	21	17	21	17	14	17	14	12	10

For absolute test reports, CUs are expressed as a percentage of total lumen output. Calculations were based on published IES procedures, and are based on the zonal cavity method. Basic assumptions: 1) Room surfaces are lambertian reflectors. 2) Incident flux on each surface is uniformly distributed. 3) The room is spectrally neutral. When luminaires are not evenly distributed throughout the room, or do not exhibit lateral symmetry, CU values may differ from actual performance.

**Circle of Light Plot**

Height(ft)	Illuminance at Nadir (fc)	Beam Width (across 50% Nadir Illum)	
		0-180	90-270
6.0	41.1	7.74	7.74
8.0	23.1	10.32	10.32
10.0	14.8	12.90	12.90
12.0	10.3	15.48	15.48
14.0	7.5	18.06	18.06
16.0	5.8	20.64	20.64



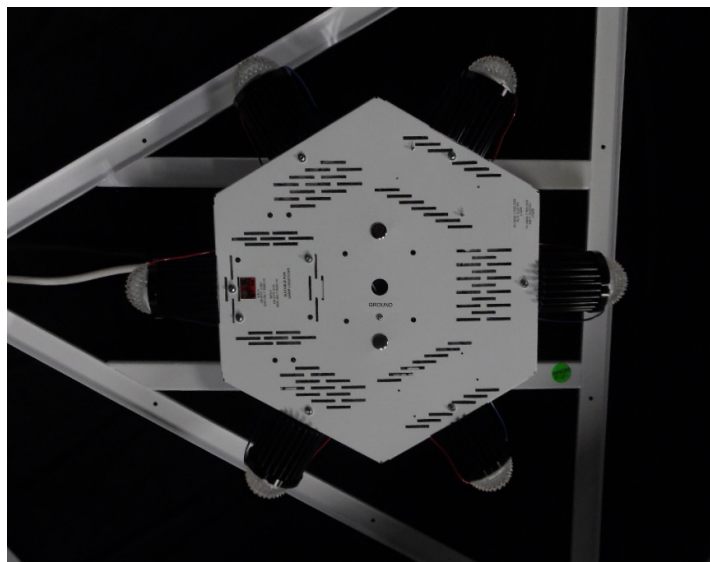
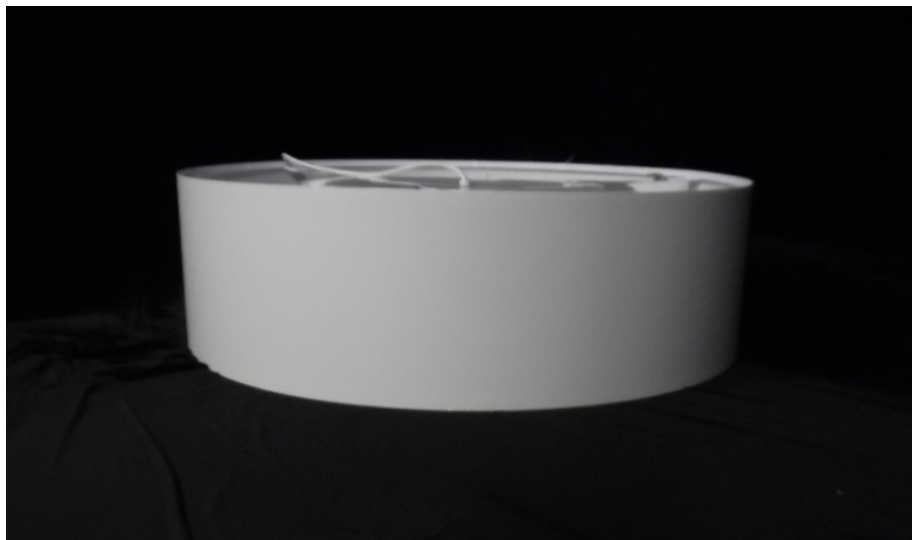
**Test Report No. LLIA000901-048-R01**

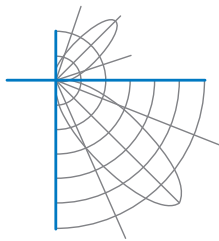
Catalog Number: P54814/F11/D61/L414

Pendant mounted, formed white enamel steel frame with white "lumenate" diffuser, translucent white top and bottom enclosures.

Six white LED modules with clear patterned hemispherical lenses below each.

Two ERP ESP050W-1200-42 LED drivers and two ERP ESS030W-0620-42 LED drivers  
120.0Vac, 60.00Hz, 1.206A, 142.8W, 0.987PF, 11.3%THD(i)





**Test Report No. LLIA000901-048-R01**

Catalog Number: P54814/F11/D61/L414

Pendant mounted, formed white enamel steel frame with white "lumenate" diffuser, translucent white top and bottom enclosures.

Six white LED modules with clear patterned hemispherical lenses below each.

Two ERP ESP050W-1200-42 LED drivers and two ERP ESS030W-0620-42 LED drivers  
120.0Vac, 60.00Hz, 1.206A, 142.8W, 0.987PF, 11.3%THD(i)

**Test Distance** 9.5 m  
**Test Temperature** 25.2 °C

**Notes**

The laboratory has not participated in the selection of samples to be tested. All testing is performed on the understanding that the significance of the report is limited to the extent that the test sample is representative of production units.

Tested in accordance with the applicable sections of publications: IES LM-79-08 (Sec. 12), IES LM-16-93, IES LM-58-13, CIE 13.3:1995, CIE 15:2004, ANSI C78.377:2015, ANSI C82.77-10:2014.

The luminous intensity values, and other derived quantities, contained in this report are based on the absolute data, as measured.

Prorating the performance of the sample for the use of other component combinations (such as lamp / LED / Ballast / driver), or for use in different environmental conditions than that tested, may produce erroneous results.

This report is free of erasures and corrections.

Photometric intensity values are reported using the CIE Gamma coordinate system as defined in CIE publication number 121.

This report may contain data that are not covered by the NVLAP accreditation. Quantities marked with \* are not covered.

This report must not be used by the customer to claim product certification, approval or endorsement by NVLAP, NIST, or any agency of the Federal Government.